



# Whangarei Girls' High School

September 2016



*Alexia Laybourn with her award winning investigation which focused on developing a way in which beekeepers can classify pollen sources.*



## Dear Parents / Caregivers

Tena koutou katoa

Ngā mihi

The end of term is now in sight and planning for 2017 is well underway.

The start of this term saw some staffing changes with George Xi and Cala Rentoul not returning this year due to ill health, Doreen Bailey is on secondment to the Ministry of Education, Amy Groome is taking refreshment until the end of the year and Lenna Milton has started her maternity leave. They all leave with our best wishes.

We are most appreciative of Rod Watson, Dave Hallsworth, Evan Jones, Marilyn Andrews and Dr Candace Pettus- Moetara who responded to our pleas for help in Chemistry, Physics, Science and Mathematics at short notice and who have bent over backwards to ensure our senior students are well prepared to gain the credits in their respective subjects. Phil Mechen has joined our Senior Leadership Team until the end of the year and we are delighted to welcome back Hayley Taylor who is working part time in the Physical Education and Health Departments. We also warmly welcome Joy Jackson to the English Department in a fulltime position and Deb Fisher who is working part time. We are fortunate to have such high calibre staff who are prepared to go the extra mile for our students. At the end of this term, we will farewell Jayne Southee who will start her maternity leave and we wish her all the very best for the wonderful world of being a parent. Kim Rogers, who is currently HOD Maori and Manutaki Māori at Kerikeri High School will join our Senior Leadership Team as Deputy Principal on 7 November until the end of 2017 when Doreen Bailey will complete her secondment.

The school practice examinations have now all been completed and students have received their results. We hope that they reflect on their results, taking notice of the feedback and feed forward from their teachers so that they can improve in the external examinations next term. With such a short time remaining for senior students, it is important that they make the most of their remaining class time, attending every lesson ensuring they have a study and work plan to follow and that they complete all their assessments to the best of their ability and on time.

If you have a daughter in the senior school, we hope that you are finding the new three weekly reporting system helpful as you can more easily track her progress towards her NCEA qualification. You can see at a glance how many credits she still needs and how many are available to her. Hopefully, the gap will be quickly closing as internal assessments near completion and the remaining credits are largely external ones for the majority of students. Students who have no or few external credits available, but are still short of the required number when NCEA examinations start, will stay at school to complete more internal assessments.

We are now in full planning mode for 2017 as most students have returned their option forms for 2017, Year 13 students have completed their respective application forms or processes for tertiary study or employment and enrolling is still underway for new students for 2017. If your daughter has not returned her option form or has not told us that she intends to leave, please can you give this your urgent attention so that we are making decisions based on the most accurate information possible. Exciting news on the property front will finally see the start of our new classroom block next term. A-Line Builders have been awarded the contract and designs are in the final stages before going to the Design Review Panel for approval. The completion date is the end of 2017, ready for occupancy at the start of 2018. Over these holidays, another long awaited project will be completed as the floor in Manawahine Gymnasium will be replaced.

Congratulations to our tournament teams and to all the coaches, managers, support crew, officials, parents and whanau as it takes the support and encouragement of all of you for our girls to play as well as they did and gain the most from the experience of tournament competition. We are so proud of all our teams and proud to have them represent our school. We are thrilled with the results. Special thanks to players who filled in for unexpected and late withdrawals as this is never easy, but it provides a great opportunity to which you all rose so well. Special congratulations to our squash team who placed 2nd best in New Zealand. Our 1<sup>st</sup> X1 hockey should feel so proud to be the 6<sup>th</sup> best secondary school team in NZ and our 1<sup>st</sup> X1 football team should be equally proud to be the 12<sup>th</sup> best secondary team in NZ in their first year of premier competition after several years in the satellite tournament. So too, for the netball who retained an impressive 11<sup>th</sup> placing with several new players and the 2<sup>nd</sup> X1 hockey who played close and hard fought games to finish 4<sup>th</sup> in their competition and the Senior 2 netball who also did well in their first ever UNISS tournament.

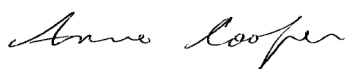
As you will read later in the newsletter, we have hosted groups of students from Otani in Japan and Haikou in China this term and they have been a delight to have here. We have thoroughly enjoyed sharing and learning about our respective cultures and showcasing our beautiful part of the world to them. Both visits have been highly successful and many thanks to Katy Mandeno and Jill Brien for their superb organisation. The schools from Haikou are keen for a group of our students to visit them next year and they will host us so we will keep you up to date with developments as that offer is firmed up.

This term has been a busy one as we have continued to work hard on our goals of moving to a more student centred pedagogy which will also raise our level of cultural responsiveness, using the inquiry process to reflect and inform decisions to improve teaching and learning, and the use of technology to enhance teaching and learning both in and out of the classroom. Many students already bring a device to school and in response to queries from parents and caregivers, we will very soon be in a position to give you some recommendations around the purchase of devices, particularly for the new cohort of Year Nine students. We are also in the process of reviewing our timetable structure as there have been some very positive outcomes such as the ease of working with the community in the certainty of knowing the timetable for each

day, but there have also been some downsides such as classes having to be split between two or more teachers which has proved difficult for both students and staff. We are now looking at ways to keep the positives and improve the parts which have not worked so well.

I wish you all a safe and happy term break and look forward to seeing everyone return for the final term when the days are stretching out and are so much warmer, with a promise of summer just around the corner.

Ngā mihi nui



Anne Cooper  
**Principal**

---

## Head and Deputy Head Girls

Term 3 is nearly drawing to a close, and it seems unbelievable that we only have just a few more weeks of high school remaining!

We are all incredibly glad to have finished practice exams and, as usual, there is lots to work on before NCEA externals arrive.

With so much happening around the school, it becomes increasingly difficult to summarise into a few paragraphs! We are excited to have received the first set of applications for Work Day Scholarships. The calibre of applicants is incredibly high, and we feel privileged to be able to support such a diverse range of students through our 'Girls Working for Girls' initiative. The scholarship recipients will be announced at the Term 4 whole school assembly, which will take place in Week 2. Voting is underway for the other half of the work day money – with a voting station having been set up in the library. The roster for whanau class voting provides every student within the school the opportunity to contribute towards the final decision.

It is very humbling to view the continuing effects of our 'Cultural Responsiveness' initia-

tive within Whangarei Girls' High. Following the official launch of Te Timatanga (the new school karakia), the affirmation has become a prominent part of daily school life – being said in every first period class. We feel that Te Timatanga is excellently serving its purpose of creating an inclusive and culturally responsive learning environment for all students, and look forward to observing its lasting legacy as it continues to unite students and staff within our school in years to come.

Prefect Committees have been working tirelessly to provide opportunities for students of all ages to have a voice, and opportunities to pursue their passions. The Global Issues Committee is currently working on its latest project, "Operation Christmas Box", in which whanau classes will fill a box with small Christmas gifts which will be sent to underprivileged children in over 150 countries.

The House Captains have run an incredibly successful charades competition, in which whanau classes were required to act out challenging categories, such as 'occupations' and 'animals', in which Lovelock were crowned champions. The International Committee continues to provide a warm and welcoming environment for our International and exchange students, hosting multiple sports nights which are a great success.

We are looking forward to the upcoming WGHS Sports Awards, run by the Sports Committee, and the WGHS Cultural Awards, run by the Music Committee, which will acknowledge the talent and determination of many students within WGHS.

The rest of the year is sure to be filled with amazing opportunities and memories, and we look forward to meeting, and being inspired by, as many girls as possible before the end of our time at WGHS!

Nga mihi,

Head and Deputy Head Girls

**Justice Hetaraka   Mihi Shepherd**

**Jessica Fowler   Dani Kirby**





## NCEA FEES

**The school office is no longer accepting NCEA fees – these can now be paid direct to NZQA:**

NZQA will accept 2016 fees directly from candidates. Candidates can log in to the NZQA website and pay their 2016 fees online using the Learner Login, or they may make a manual payment.

The [School Candidate Form – Payment of NZQA Fees \(PDF, 29KB\)](#) must accompany any manual payments.

### Late financial assistance applications

Late financial assistance applications can be made until 1 December 2016 for new or transferring candidates. The school must submit these students' details in their data file submission.

### Late fees and reminders

Any NCEA and New Zealand Scholarship payments made after 1 December 2016 will incur a late fee of \$50.

NZQA will send a letter to all affected candidates by late October reminding them they have unpaid 2016 fees.

Forms for financial assistance and for paying direct to NZQA can also be collected from the school office. Financial assistance forms should be completed and returned to the school office. Remember, even if you are not sitting external examinations, fees do need to be paid for results to be recorded in a student's Record of Achievement.

---

### The Global Issues

**Committee** would like to thank everyone for getting behind the Operation Christmas Child Shoeboxes.

By the time this newsletter is read, whanau classes will be preparing to fill their shoeboxes with goodies for a child who would otherwise likely receive nothing this Christmas.

Thanks to everyone for making a difference with a box full of simple gifts – we are looking forward to seeing them all assembled, ready for collection!



## BERNINA FASHION AWARDS

On Friday the 12th August, approximately 60 entries paraded on the catwalk. Entries were from primary, intermediate, secondary as well as open sections. This was the 39th year these awards have run and many past entrants and winners have gone on to do a variety of interesting and amazing things at numerous fashion and design schools and then out in the industries.

This year Whangarei Girls' High School was well represented again. However this year we had a more diverse range of entries due to the new Year 9 Trash to Treasure course.

Candice Hynds won the award for most outstanding first time entrant with her original screen printed 3 piece street wear outfit.

Emma Lee Marsh came 3<sup>rd</sup> in the Student Wearable art section with her elegant Chandelier Girl, which was made from recycled meat packing trays.

Gemma Brock was awarded second equal in Trash to Treasure with her armoured dress made from a few hundred can lids.

In the Student Fashion section Ariel Eggleton received a highly commended for her screen printed street wear, Megan King came 2<sup>nd</sup> with her elegant art deco inspired dress and cape, 1<sup>st</sup> place was taken by Carlita Gray for her hand marbled army dress which featured a laser cut wooden armour belt, Carla received a BERNINA sewing machine as her prize.

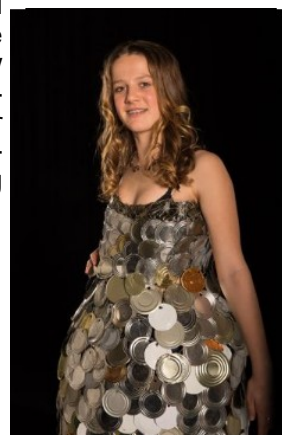
Megan King came 1<sup>st</sup> in the open fashion section with her glamorous ball dress.

Renee Topp came 1<sup>st</sup> in the Retro Re Made section.

Congratulations to all girls who entered. You all looked amazing on stage and can be proud of your creations.

Next year will be the 40<sup>th</sup> year the show has run and will be bigger and better than ever, the date looks like it will be earlier than in the past with the show on 22<sup>nd</sup> July, I challenge you and your families to start designing and creating for the event.

**Gemma Brock.  
2nd.  
Trash to Treasure**



## **English Department Corner**

There has been a lot happening in the department during the course of this term. We would like to highlight some of our students' most recent successes.

### **NZ Spelling Bee**

The regional semi-final of this event was held in the WGHS Library on August 8<sup>th</sup>. We had three Year 9 students who qualified for the semi-final by being named in the top 200 Year 9 and 10 spellers in the country. Congratulations to Erin Colane, Tegan Rutherford and Amelie Tuato'o. The semi-final saw 16 eager spellers from around Northland compete in the high pressure world of competitive spelling. We were delighted to witness Erin and Tegan making it through to the top four spellers for the region, and thereby qualifying for the national final. This means that they were placed in the top 36 spellers for their age group in the country. The final was a whirlwind of excitement for Erin and Tegan, with the discovery that this was being made into a television series to air later in the year. The results cannot be divulged but you will have to watch the series! It is called "Spellbound" and is hosted by Toni Street. The show is a three episode series, made up of three hour long episodes. All we know at this stage is that it will screen "sometime in October". What a fascinating experience for our two young wordsmiths!

### **ICAS Writing Assessment**

Congratulations to the five students who took up the challenge of this assessment. All girls performed commendably and should be rightfully proud of their results.

Year 13- Mihi Shepherd: High Distinction

Year 12- Samantha Skovlund: Merit

Year 11- Nicole Robinson: Credit

Year 9- Lily Hodgson-Bell: Distinction

Soraya Hurrell: High Distinction

This year we are thrilled to announce that Mihi and Soraya were placed 1<sup>st</sup> in New Zealand for their respective year levels. They will be awarded medals at a special ceremony in Wellington later in the year. This is an amazing achievement!

We are waiting on the results of the ICAS English assessment which took place earlier this term.

### **Slam Poetry**

The school has an active group of slam poets, led by two enterprising and committed Year 12 students, Jorja Heta and Genie Blasingame. The girls meet regularly to write poetry together, and to perform their poetry. During the last school holidays, the girls organised for a poet from the South Auckland Poetry Collective to come and work with them in a day long work-

shop. National Poetry Day on 26<sup>th</sup> August saw a group of our intrepid poets participating in Whangarei's first ever Poetry Slam at the Old Stone Butter Factory. They were crowd favourites and their spoken word resonated with the adult audience gathered there. As a group they progressed through to Round 2, as did individual poets Jorja Heta and Summer Campbell. Jorja went on to place 3<sup>rd</sup>, after making it to the final round. All of Jorja's poems were a hit with the audience. She definitely 'held her own' up against all-adult competitors. It was an inspiring event, and so wonderful to see our students given a voice to share their perspectives.

Nga mihi nui,

Marg Northey

**HOD English**

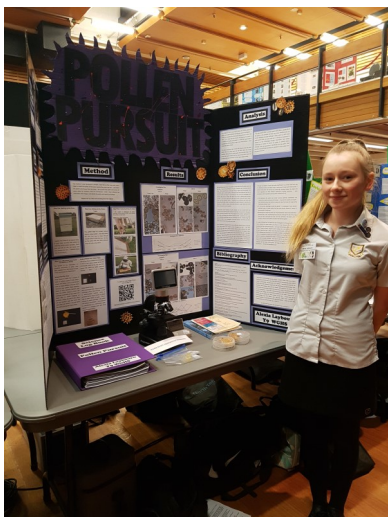
---

## **BERNINA FASHION AWARDS PHOTOS**

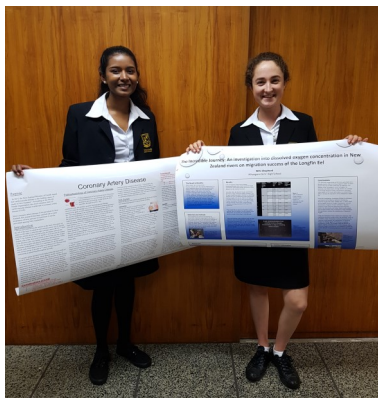
**Megan King– 1st.  
Open Fashion  
Wear.**



**Candyce Hyndes—  
Best 1st time  
entrant.**



## Science Corner



The Science Department wants to acknowledge the work that Mrs Phillips has done in encouraging and guiding the students in their Science Fair projects.

### Central Northland Regional Science Fair

This year we had eleven high calibre entries, represented by thirteen girls in the Central Northland Science Fair, which was held at Forum North. This Science Fair was a tough competition, with the girls competing against each other as well as entries from at least six other secondary schools. The Science department is very proud to share the following outstanding awards seven of our girls received.

**Niamh Walton** who investigated the effect of different feed supplements on meat quality received the Statistical Award. **Lauryn Smith** who investigated the sucrose and glucose quantities in fruit received a Highly Commended for Year 10/11 Investigation. **Sanji Suresh Kumar** who researched coronary artery disease received a High Commended for Year 12/13 Applied Science as well as the Manaia Health PHO Health and Wellness Award. **Mihi Shepherd** who investigated the effects of dissolved oxygen levels on the migration of the long finned eel received the Best Year 12/13 Applied Science Award, the Year 12/13 Peer Review Award, as well as a Highly Commended for the Department of Conservation Award. Working together, **Tove Petersson** and **Rosie Wojcik** investigated the use of Azolla as a water purifier. Their entry received Best Year 10/11 Investigation, Best Year 10/11 Exhibit, Otago University "Hands on Science" Award which gives them a full scholarship to spend one week at the end of this year at Otago University. They will be joining **Lauryn Smith** who received this award last year. **Lexi Laybourn**, who investigated how to classify the source of pollen within honey, received Best Year 9 Investigation, Best Year 9 Exhibit, Farmlands Central Northland Research Award, Farmlands Primary Industry Award, Best Overall Investigation, Best Overall Exhibit. She is the first student from Whangarei Girls High School to take this award home since 2000.

Well done girls, your hard work and commitment was well deserved.

**Want to order a revision book before NCEA exams?** Last order is 14th October.

Order forms from the technician—Mrs Younger. Payment to the front office.

**Try these helpful websites for revision:**

**Learncoach for Level 1—3**

**Nobrainitoosmall**

**Pathwayz**





## HOMESTAYS REQUIRED

Next year we are hosting a group of 60 students from Shinwa Girls' High School in Japan.

The group is here from 18 March until 4 April 2017.

If you have an interest in hosting international students, enjoy learning about the Japanese culture and have a spare bedroom in your home I would love to hear from you.

Please contact me on email:  
jill.brien@wghs.school.nz

**Homestay Manager Whangarei Girls' High School.**



## PTA 2nd HAND UNIFORM SALE

4.30pm—5.30pm Thursday 13 October in the SSC, prior to PTA meeting.  
Cash only or pay at the school office the next day. Most items \$5—\$25.

If you would like to donate any WGHS uniforms to the PTA we gratefully accept all donated goods—please leave at the WGHS office.

The Kathmandu/WGHS sale held on 24 August was very successful—there is likely to be another one in October. Date to be confirmed.



## **NEW SCHOOL APP**

Key features and advantages for students and caregivers:

Absentees – direct phone link or email form – fill in only once – re-members details

Access School newsletters, daily notices, school calendar, term dates

Direct link to Parent Portal

Links to learning sites for students

Alerts for groups – eg sports teams, cultural groups etc

Maps

Key school contacts

Easy share – send to others

## **Whangarei Girls' High School now has a School App!**

Go to the App Store on your Apple or Android Device and Search Whangarei Girls' High School to download the App to your phone or tablet.



*With Lesley Elliot*

# How to Keep Relationships Healthy

## You are invited to a community event!

An event to raise awareness among all young people, their friends, families and community of signs of partner abuse.

### Location Details

Whangarei Boys High School

Wednesday 21st September, 2016

6.00 - 8.00pm



### All Welcome!

Suitable for young people over 13 years. Bring your parents

Supper provided with gold coin donation

## Year 13 Exhibition "More than Words"

Opening Night Thursday 15<sup>th</sup> September 5pm – 7 pm  
Yvonne Rust Gallery, The Quarry Arts Centre.

The Exhibition runs from the 14<sup>th</sup> September – 21<sup>st</sup> September.

The Exhibition is a showcase of work from our Year 13 Visual Art students in the fields of Painting, Design and Photography.

The Visual Art Department sends out an invitation to all to visit and view the students work in a Gallery setting.

WHANGAREI GIRLS HIGH SCHOOL PRESENTS

## MORE THAN WORDS

A SHOWCASE OF WORK FROM WGHS STUDENTS



SEPTEMBER 15-21

OPENING THURSDAY 15<sup>TH</sup> 5.30 TILL 7.00

THE QUARRY ARTS CENTRE

MONDAY to FRIDAY



## Connecting with other cultures

Every day we are reminded how fast the world is changing and diversifying, and to connect our students with people and cultures from around the world is one of the best ways we can give them a headstart for their futures.

One way we do this is through the international students we invite into our school, both individuals and groups, who stay for anywhere from 10 days to several years.

We were delighted last month to welcome two very special groups to our school – from Otani High School in Japan and from Haikou, in the Hainan Province of China.

We worked together with Whangarei Boys' High School, with students joining both schools, for an action-packed and hopefully very memorable stay in New Zealand.

In the ten days they were with us, the Otani students enjoyed intensive ESOL classes, art and cooking classes, teaching our students calligraphy and origami, visiting Whangarei Intermediate and much more.

The senior students from Haikou had been especially chosen to come through a scholarship selection process. Over three weeks, they experienced typical 'kiwi' school life and curriculum, and commented that it was in complete contrast to their schooling back home. Both our students and teachers also found it fascinating learning about where they were from, and how their day-to-day lives differed so greatly from ours.

Highlights included an amazing school powhiri, an official mayoral welcome to Whangarei by Mayor Sheryl Mai, amazing sharing of life stories with local students, long-term friendships being forged in Lupton House, a visit to NorthTec to learn about New Zealand's tertiary pathways, meeting a kiwi and three amazing days (complete with stunning weather) in the Bay of Islands, where the students got to check out glow worms, try kayaking, climb Urupukapuka and learn all about Waitangi and a little of our country's very special culture.

It was an incredible cultural exchange and we are now working towards signing a Sister School agreement with Haikou Experimental Middle School, which will hopefully give some of our students the opportunity to visit China in the future.



## School Calendar

### Sept

- 15-20 Yr13 Art Exhibition  
NSSSA Volleyball Yr 9
- 16 Early finish for Students – 12.50pm  
Yr13 Art History trip to Auckland Gallery  
WGHS/WBHS Social  
NSSSA Ki-O-Rahi  
SADD mock car crash
- 19 Yr12 & Yr13 Enterprise trip
- 19-20 Yr11 Drama show
- 20-23 National NMK—ASB stadium
- 20 Rogaine Champs  
Yr13 Barista-Northtec
- 21 Auckland Zoo trip  
13FNT Hip Group visit  
2017 Prefect applications close
- 21-22 Yr10 Contribute Days
- 21-23 Hairdressing course
- 21-22 Yr11 Drama show
- 21 SADD race
- 22 Yr13 Seminar day
- 22 13OED SUPP Event
- 23 Snr Progress Reports issued  
2017 Head Girl Applications close  
Student BOT voting closes  
**END OF TERM 3**

### Oct

- 10 Beginning of Term 4**
- 13-18 2017 Prefect voting
- 13 Yr12 OPC 1st Aid
- 14 Yr12 Tourism trip– BOI
- 17 11AGH Farm visit  
BOT Meeting
- 19-21 Yr13 OPC SCUBA  
WGHS Cultural Awards  
Whole School Assembly
- 20 WGHS Sports Awards
- 21 NSSSA Touch-Kaikohe
- 24 LABOUR DAY
- 26 Yr13 Hosp & Tourism placements—Paihia
- 27 Snr Art Exhibition 4pm-6pm  
ASB NSS Sports Awards

### MAUNU TENNIS CLUB

**SENIOR** opening, Saturday 17th September, 10am start, thereafter 1pm on Saturdays

**TWILIGHT** starts September 29th, 5.30pm

**LADIES** day every Wednesday 9am start.

**JUNIOR RALLY** Tuesday October 11th, 3.30pm onwards

Queries, Ray or Sue Webb 4346898



### Enrolments for Drama Classes Now Open:

We are taking NEW enrolments for the following classes, Ta Da Drama ages 7-10 and Lime Light Drama years 6-10. \$120 per term. Tuition is open to beginners and experienced students.

Term Four is the beginning of our drama calendar and a good time to start.

Classes in Whangarei & Ruakaka. contact us to book your child's place at

[www.makingascene.co.nz](http://www.makingascene.co.nz).

